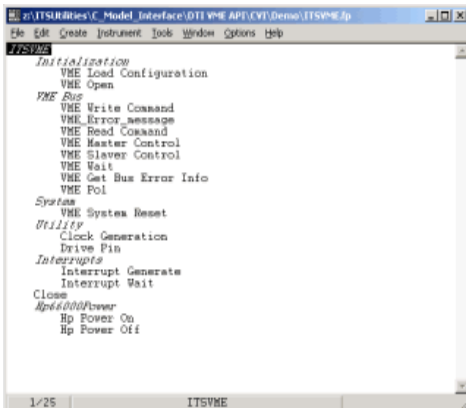


Digital Test Instrument VME C-Model Interface

The VME API provides test developers with a high level-programming environment suited for developing or re-hosting test programs. Advanced test sets become more feasible due to the API's ability to be used in both C and C++ based development environments.



VMEbus API C-Model Interface integrated into LabWindows CVI, as a test instrument - with easy to use function calls.

The VMEbus API allows your Digital Test Instrument (DTI) to communicate with VME circuit card assemblies (CCA's) using standard VME protocol. The API emulates VME activity using internal state machines.



Integrated Test Solutions
585 Shaker Road East Longmeadow, MA 01028
Phone: (413) 525-2888 Fax: (413) 525-2051
www.itsus.com

VMEBus

VMEbus C-Model Interface

C-Model Interface